



MOBILE SMART 3D SURVEILLANCE SYSTEM

FULLY-AUTOMATED SECURITY SOLUTION



Innovative & Cutting-Edge Mobile 3D Security Featuring:

- Robust, proven Rise Up Technologies solar-powered mobile platform with leading wireless technology
- The Leica Geosystems BLK247 Smart 3D Surveillance system provides accurate human-intruder detections based on LiDAR data and AI in any lighting conditions along with 360° video coverage and thermal imaging.
- Luxriot EVO, Video Management Software is a high-performance VMS for a single server surveillance system or multi-location surveillance . Full integration with Leica BLK247, NOAA & TAA compliant, six levels of cyber security with up to unlimited channel licenses.



24/7 REAL-TIME SECURITY PROTECTION
CALL +1 346-295-8900

WWW.RISEUPTEC.COM

MOBILE SMART 3D SECURITY SURVEILLANCE

ODS6000S - 3D is easy to deploy for accurate detection of unidentified objects or persons in an entire space or specific zones using 3D geofencing. The mobile unit can be quickly deployed and moved around, making it perfect for sensitive installations, high profile events, construction companies, oil and gas firms, and other companies that require mobile on-site surveillance.

STATE-OF-THE-ART DETECTION SYSTEM

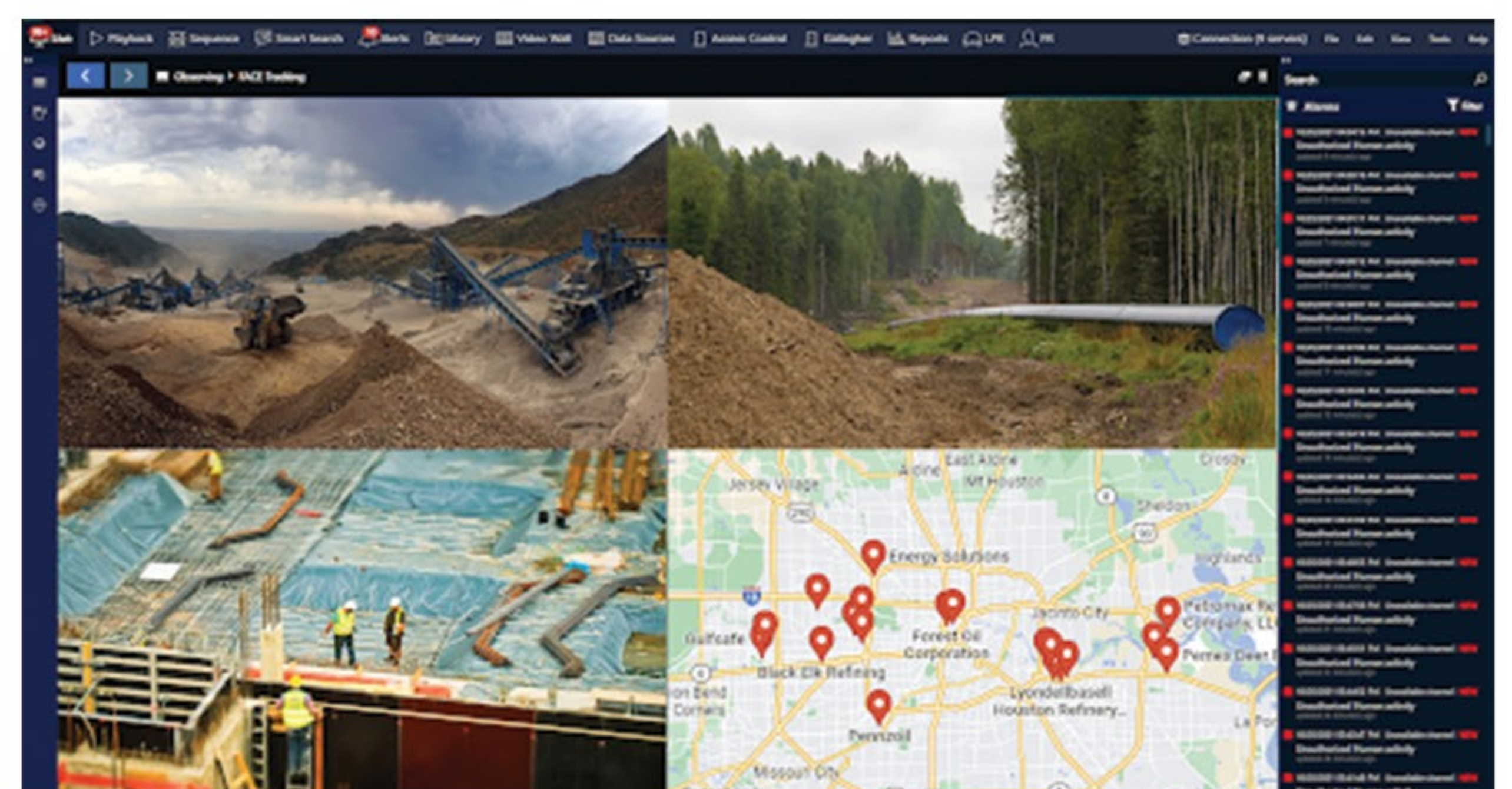
It can detect objects in total darkness to daylight conditions using Leica BLK 247 - LiDAR, thermal imaging, and video sensors, by performing real-time change detection in 3D. It has AI-enabled to distinguish between threat and non-threat for accurate alarming. This provides an additional layer of detection technology to existing security systems and reduces costly false alarms caused by animals, rain, trees swaying or trash blowing through the protected area.

LUXRIOT EVO S VMS RUNNING ON RUGGEDISED ONBOARD SERVER

Luxriot EVO S and EVO Global along with Luxriot Crosslink, are a complete virtual video management ecosystems, with an efficient scalable architecture, intuitive interface, advanced security features, powerful analytics modules and extensive possibilities for integration. Luxriot EVO fully integrates with Leica BLK 247 utilizing its 3D perimetric data from LiDAR, ensuring no activity in the 3D zones goes unnoticed. The thermal and video sensors gives Evo S additional detection and analysis capability of events utilizing most advanced AI. You can Send emails, activate DI/DO, interact with intruder or just bring the attention of the operator for immediate action. The functionality can be used not just for a single event, but a set of sequenced events to get rid of false alarms and improve the efficiency of the surveillance system.

LUXRIOT EVO FEATURES

- **Video Content Analysis**
New modules for advanced video analytics, face and license plate and container management
- **Advanced Event and Action Manager**
Automated video surveillance process using the Alarm and Action manager
- **Edge Recording**
Synchronize all your data with IP device storage.



- **Multiple Mapping Options**

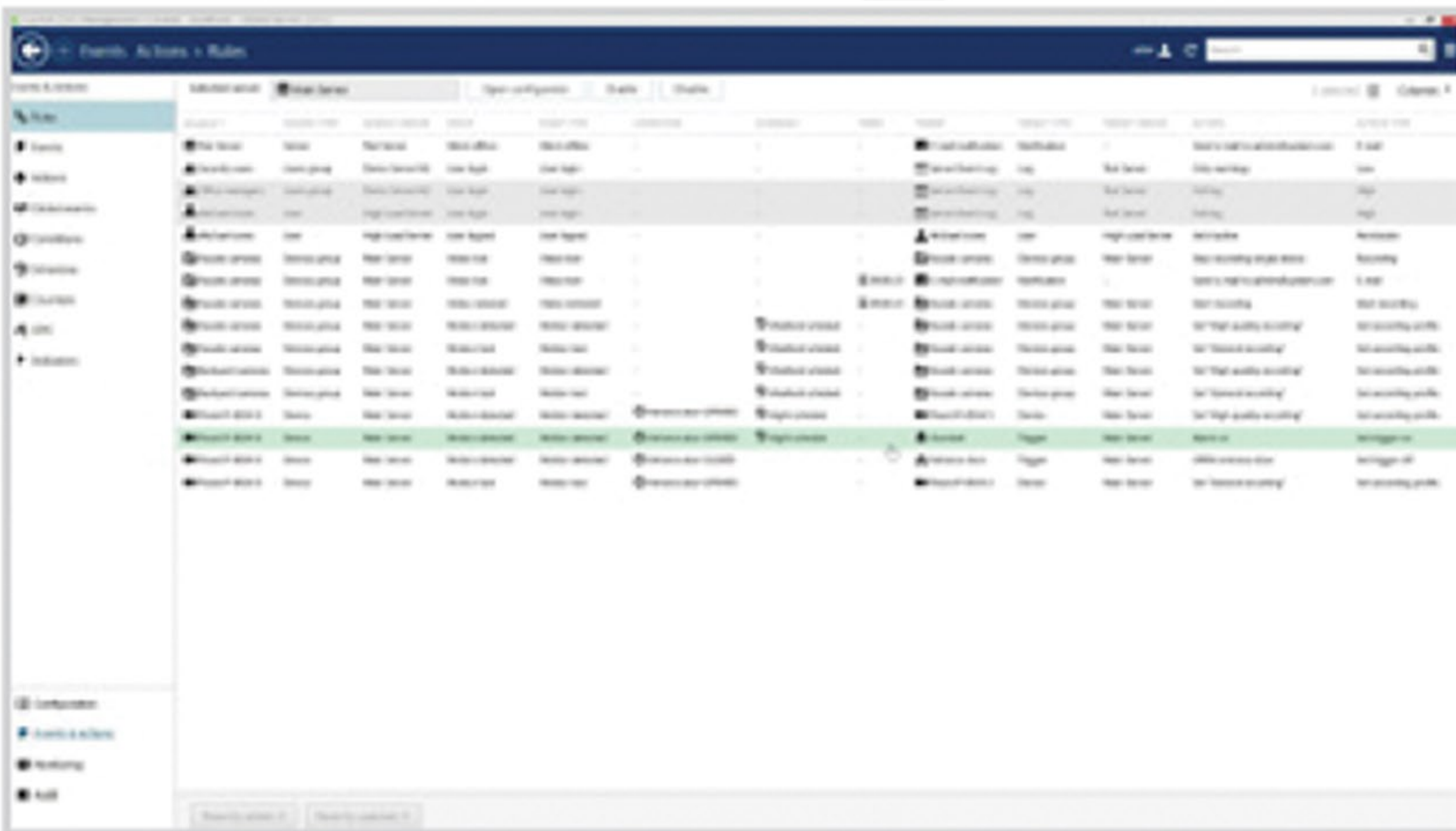
All the alerts are integrated with Bitmaps and Geo maps.

- **Integrations and API**

Luxriot offers customisable integration with other software systems in the form of a Luxriot HTTP API.

- **Alarm Acknowledgement**

Ensure no events are overlooked by the operator.



FULL COVERAGE, WIRELESS CONNECTIVITY & SEAMLESS ACCESS

Its 3D geo-fencing surveillance provides a 360° horizontal x 270° vertical field-of-view coverage wirelessly accessible 24/7 on an integrated Video Management Software (VMS) or Physical Security Information Management (PSIM) system via 4G/5G connectivity.

SOLAR-POWERED LONG-LASTING BATTERY

Have confidence in your security system and deploy to remote locations without electricity. OD56000S - 3D mobile surveillance is solar-powered with long-lasting energy storage that keeps your system going even on low sunlight days.

SOLAR & BATTERY SPECS

WATTAGE: 680Watts

BATTERY: 4 x 150 Ah



MECHANICAL SPECS

Tow ball Size: 2"

Length with tongue: 170"

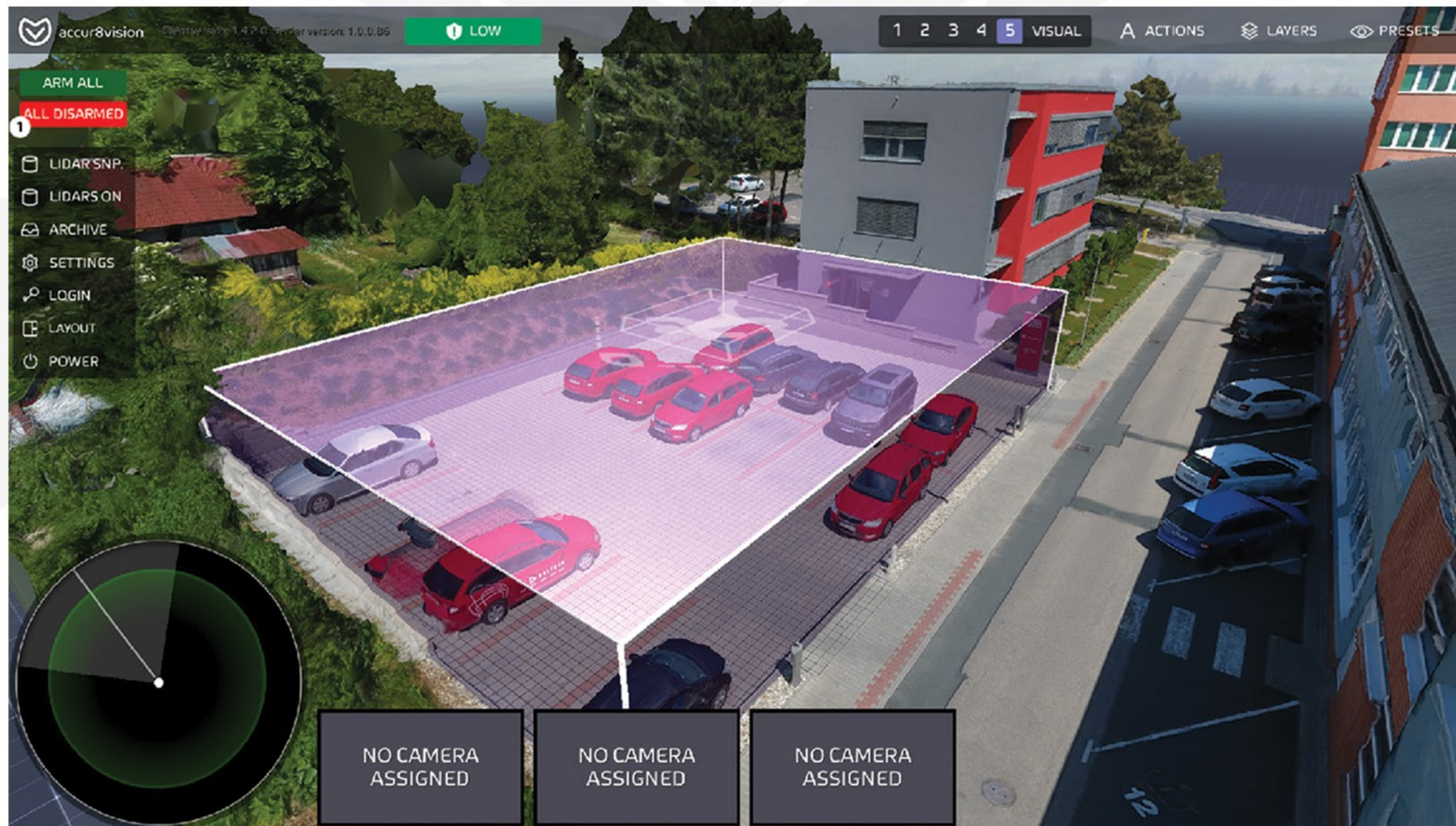
Width: 86"

Height (Mast retracted): 80" | 94"

Height (Mast extended): 228" | 330"

OPTIONAL: ACCUR8VISION

ODS6000S - 3D can also be equipped to power Accur8vision which is the first of its kind real time 3D perimetric security system. It allows the operator to have information of exact location, size, and speed of the intruder. Even the trajectory of his movements will be known.



CONTACT US

 sales@riseuptec.com

 3115 N. FRY RD., SUITE 503 KATY, TX 77449 U.S.A.